

Seuic

CRUISE GeP

Industrial-grade Mobile Data Terminal

Classic Reimagined, King of Performance

Based on the flagship model CRUISE Ge, the CRUISE GeP features an all-new upgrade in screen size, CPU performance, and battery design. With smooth operation, rugged durability, and versatile data capture capabilities, it significantly enhances operational efficiency in logistics, retail, and public service applications.



Core Advantages

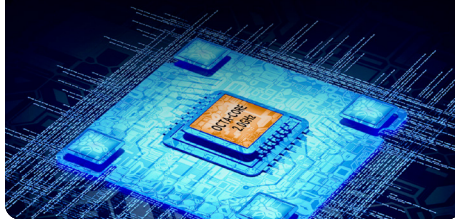
Classic Reimagined, Ultimate Experience

- Chamfered edges for a comfortable grip
- Textured anti-slip surface with wrist strap support



Performance Boost, Faster Response

- 2.0GHz next-gen processor
- Android 12 system



Stable Transmission in Complex Environments

- High receiving sensitivity for stable weak-signal connection



Pro-grade Scanner Easily reads challenging barcodes



Long-lasting Power, Safe Use

- Detachable 5000mAh battery
- Hot-swappable design
- Smart battery health management



Rugged & Durable

- 4.9ft./1.5m drop resistance, IP67 protection
- Reliable for 5+ years of use



Typical Application Scenarios



Logistics/Courier Industry
Pickup & delivery/
Parcel station warehousing



Retail Industry
Order & return processing/Online purchase &
in-store pickup/Assisted sales/Inventory management



Public Utilities
Inspection/Ticketing/
SPD consumables management

CRUISE GeP Series Technical Specifications

Physical Characteristics		Data Capture	
Dimensions	6.18 in. L x 2.99 in. W x 0.57 in. H 157 mm L x 76 mm W x 14.4 mm H	Scanning	Seuic 2D Barcode scanner Camera scanning
Weight	9.7±0.18 oz./275±5 g (include battery)	Camera	Front: 5 MP Fixed-focus Rear: 13 MP autofocus, support flash LED , support PDAF automatic focusing
Display	5.5 in. color HD (720 x 1440)	NFC	Supports tags ISO15693, ISO14443A/B (without encryption protocol), Support ID card, HF frequency band: 13.56MHz, Reading distance: 0-6cm (ISO15693), 0-4cm(ISO14443A), 0-2cm ID card
Touch Panel	Capacitive touch, supporting wet hand mode and glove mode		
Power	Detachable 5000mAh lithium ion rechargeable battery		
Expansion Slot	Maximum compatible storage: 128GB		
Interface/ Communication	Waterproof Type C USB interface, supporting Type C earphone, USB2.0 HighSpeed, OTG and fast charge SIM card TF card one of two		
Notifications	Sound, vibrator, LED light indication		
Keypad	Volume +/- button, Power ON/OFF button, Left Scan button, Right Scan button, Function keys		
Voice and Audio	Built-in front-firing mono speaker (1W) , built-in dual microphones (with noise reduction function)		
Performance Characteristics		Wireless Connectivity	
CPU	MTK Octa-core 2.0 GHz	WLAN	
Operating System	Android 12	WLAN Radio	IEEE 802.11a/b/g/n/ac (2.4G/5G dual-band WIFI) protocol
Memory	4GB RAM/64 GB Flash memory	Frequency Range	Depending on the country (region): 2.4GHz: 2.412GHz - 2.472GHz; 5GHz: 5.180GHz - 5.825GHz
		WWAN	
		WWAN Radio	GSM: Qual Band(850/900/1800/1900Mhz) TD-SCDMA: Band34,Band39 WCDMA: Band1 , Band5 , Band8 CDMA 1x /EVDO : BC0 TDD-LTE: Band34 , Band38 , Band39 , Band40 , Band41 FDD-LTE: Band1 , Band3, Band 5 , Band7 , Band 8 , Band 20 , Band 28
		GPS	GPS+A-GPS+GLONASS, Beidou or Galileo GPS: L1(1.575GHz); Beidou: B1(1.561GHz); GLONASS: L1(1.602GHz)
User Environment		Accessories	
Operating Temp.	-4 °F to 131 °F/-20 °C to +55 °C	Standard	Power Adapter, USB Cable)
Storage Temp.	Battery excluded: -40 °F to 158 °F/-40 °C to +70 °C	Additional	Protective case, Hand strap, Single device charging cradle , 4 batteries charger
Humidity	5% to 95% RH, non-condensing		
Drop Spec.	4.9 ft./1.5 m drops to concrete at room temperature		
Tumble Spec.	500 rounds, rolling by 0.5m (equivalent to 1000 impacts)		
Sealing	IP67		
Electrostatic Discharge (ESD)	±15 kV air discharge, ±8 kV direct discharge		
Sensor	G-sensor, light sensor, proximity sensor		
		Third Party Application Development Support	
		System Software	Android 12
		System Programming Environment	Eclipse, Android Studio



Official Website:
www.seuic.us
en.seuic.com



Service Mail :
inquiry@seuic.us
marketing@seuic.com

